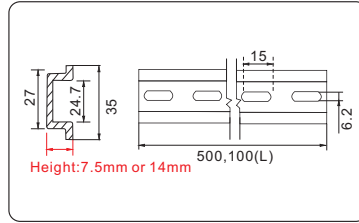
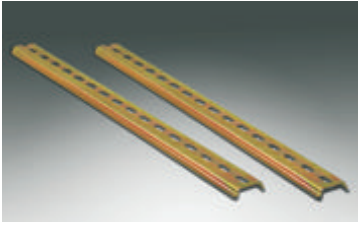


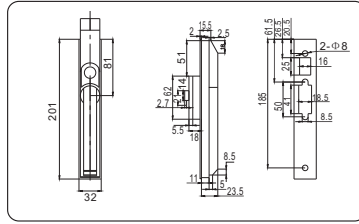
## Accessories of floor stand cabinet



### C35 rail

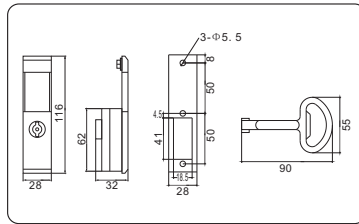
Model	Height(mm)
C7.5-2m	7.5
C14-2m	14

C35 rail is to be fixed on the cabinet to hold electronic components (circuit breaker, DIN-panel meter, etc)  
Material: rainbow colored steel sheet 1.0mm thickness, 2 metros  
Supply include: C35 rail    Package: 1 piece



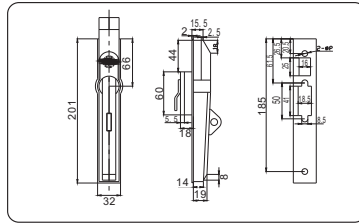
### Cabinet lock

Model: MS830  
Material: ABS and iron  
For the door lock in the cabinet AR9000 or AR8000  
Supply include: 1pcs/set with lock system, key and fixing accessories  
Package: 1 piece



### Cabinet lock

Model: MS 821



### Cabinet lock

Model: MS 830-6P-1  
Material: ABS and iron  
For the door lock in the cabinet AR9000 or AR8000, for pad lock standard, pad lock is offered separately  
Supply include: 1pcs/set with lock system, key and fixing accessories  
Package: 1 piece



### 130° Door Hinge

Model: TJ-CH130  
Material: steel iron, zinc-plating, door hinge for AR9000 or AR8000 cabinet  
Supply include: door hinge  
Package: 6pcs/set



### Common screw

Model: Screw M5X10mm  
Material: Steel, zinc-plating, used for cabinet profiles, punching rail and punching material  
Supply include: screw M5 X 10mm  
Pack: 100pcs/set



### Sealing rubber strip

Model: RUB001  
Material: rubber, width 15mm  
By sealing the gap between two cabinets  
Supply include: sealing rubber strip  
Package: 10 metro/roll

# AR8000P one piece floor stand cabinet with toughened glass

## AR8000P one piece floor stand cabinet with toughened glass

Material: cold steel rolling sheet

Protection degree:IP 55, Impact resistance IK10

Color:RAL7032 RAL7035,paint finish epoxy polyester powder coating textured finish

Thickness of the sheet steel:Front door: 2.0mm/ enclosure body 1.5mm/bottom cable plate 1.5mm/  
galvanised mounting plate: 2.5mm/toughened glass 5.0mm



### Supply Include:

AR8P structure enclosure body,door complete with MS821 locking system and hinges with toughened glass,bottom with removable cable entry,4 lifting eyebolts  
Plinth to be offered separately(See Page 22)

Model	W × H × D mm	no. of door
AR8P 128/3	800 X 1200 X 300	1
AR8P 146/3	600 X 1400 X 300	1
AR8P 146/4	600 X 1400 X 400	1
AR8P 148/3	800 X 1400 X 300	1
AR8P 148/4	800 X 1400 X 400	1
AR8P 166/3	600 X 1600 X 300	1
AR8P 166/4	600 X 1600 X 400	1
AR8P 168/3	800 X 1600 X 300	1
AR8P 168/4	800 X 1600 X 400	1
AR8P 186/3	600 X 1800 X 300	1
AR8P 186/4	600 X 1800 X 400	1
AR8P 186/5	600 X 1800 X 500	1
AR8P 186/6	600 X 1800 X 600	1

Model	W × H × D mm	no. of door
AR8P 188/3	800 X 1800 X 300	1
AR8P 188/4	800 X 1800 X 400	1
AR8P 188/5	800 X 1800 X 500	1
AR8P 188/6	800 X 1800 X 600	1
AR8P 206/3	600 X 2000 X 300	1
AR8P 206/4	600 X 2000 X 400	1
AR8P 206/5	600 X 2000 X 500	1
AR8P 206/6	600 X 2000 X 600	1
AR8P 208/3	800 X 2000 X 300	1
AR8P 208/4	800 X 2000 X 400	1
AR8P 208/5	800 X 2000 X 500	1
AR8P 208/6	800 X 2000 X 600	1

more size to be request to the clients



One piece enclosure



Cable gland plate



Hinges

## AR9 combined cabinet



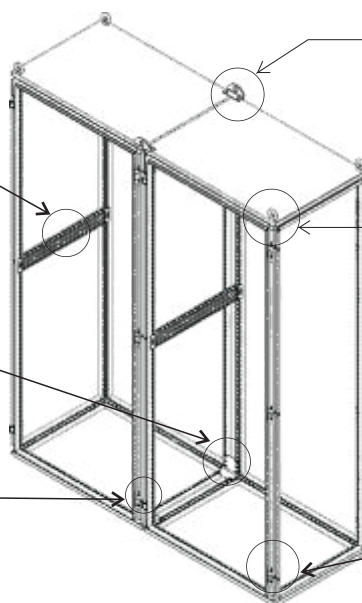
WD Rail



WA 020



WA 010



WI300



WA 065



TJ-CH130